

## STRONGER THAN STEEL

STEPHANIE TEMPLIN COLLECTIONS MANAGER ESVHS



DESCENDANTS OF MARGARET BENSON LECATO



PHOTO BY JAY DIEM, ES NEWS



PHOTO BY NORTH STREET PLAYHOUSE



What began as interesting stories during the course of Kellee Green Blake's research, as she wrote her book on the Civil War events on the Eastern Shore, evolved into a multi-program event, which kicked off with an exhibit opening, *Stronger than Steel*, at Ker Place this past March and ran through the end of June. The exhibit showcased the lives of 10 Eastern Shore Women during the events of the Civil War.

The lives of these women were pieced together through diaries, newspapers, and federal documents that were saved by both private families and public archives. From a battle of letters between a school teacher and General Benjamin Butler, to the worried writings of a seventeen-year-old girl, *Stronger than Steel* showcased and brought to light these women's achievements.

The second phase of events was a series of lectures in April, beginning with a sold out Lunch & Lecture presented by Mrs. Blake at Ker Place: *The Fight of their Lives: Finding the Stories of Civil War Women*. The lectures continued with a panel discussion, *The End of an Era: Top 10 Moments in the Civil War on the Eastern Shore*, presented to a full house at the Onancock Baptist Church. The discussion featured notable lo-

cal historians Kellee Blake, Dennis Custis, Dr. Kirk Mariner, and Jerry Doughty, and was moderated by Paul Levensgood, former President and CEO of the Virginia Historical Society.

The biggest event of the series was the *Stronger than Steel: Civil War Voices of Eastern Shore Women* performance, held at North Street Playhouse, the weekend of May 20th-22nd. The play, written by Kellee Blake, and directed by Terry Bliss, brought these 10 remarkable women to life. Further illustrated by photographs and archive documents from Kellee Blake's research, the actresses told the story of the civil war from the point of view of Shorewomen such as Maggie and Elizabeth LeCato, Catherine Poulson, Candice Godwin, and Tabitha Harmanson. Each showing performed in front of a sold out crowd.

The Historical Society thanks Kellee Blake for opening her research for us to interpret in this exhibit. We would also like to thank Mr. & Mrs. Bob Doughty, Mr. & Mrs. Thomas L. Blake, Mr. & Mrs. Charles Chase, Mr. & Mrs. Joseph Hopkins, Mr. Bill Savage, and the Locustville Academy for lending the Historical Society documents and artifacts to illustrate the lives of the women who were Stronger than Steel.



Dear Friends,

Each year our family looks forward to a summer vacation in Wilmington, NC. One of my favorite parts of vacation has always been the road trip - windows down, listening to music at obnoxiously loud levels, and the excitement of a whole week at the beach in front of you. This month, while I was driving and singing to the radio in my best Miranda Lambert voice, I heard Eric Church's, "Having a record year". It made me recall this past year and all of the exciting events, programs, exhibits, and lectures the Historical Society has presented. It was one of those moments when I just had to smile to myself and say, yea, we're "having a record year!"

This year the Historical Society staff and I made it our goal to provide fun, creative, and inspiring mission-based programming and events for you. With such uplifting programming as *Downstairs at Ker Place*, *The South You Never Ate*, the *Stronger Than Steel* exhibit, lectures and North Street Playhouse production, photography and fiber art exhibits, workshops, *Music on the Lawn*, *Ker Art* and a Mount Vernon bus trip, the Historical Society has quickly become the place to get your culture vulture on!

I have always been inspired by Einstein's quote, "Creativity is intelligence having fun." As you read through this newsletter enjoying all the pictures and descriptions of our wonderful events and programs, I hope you will quickly realize that we are *definitely* not your grandmother's Historical Society. The primary focus of the Historical Society will always be to further our image as the, "go to" place for discovering, understanding and appreciating the unique history of the Eastern Shore but we can certainly wink and have a good time while doing so.

Thanks for being part of the fun!

**Hilary Hartnett-Wilson**, Executive Director, [executivedirector@shorehistory.org](mailto:executivedirector@shorehistory.org)

**Stephanie Templin**, Collections Manager & Education Director, [collections@shorehistory.org](mailto:collections@shorehistory.org)

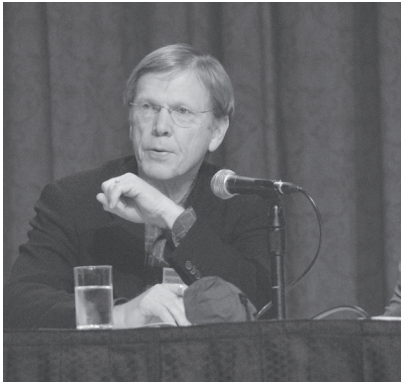
**Stacey Gardner**, Staff Accountant, [accounting@shorehistory.org](mailto:accounting@shorehistory.org)

**Shannon Cousineau Gordon**, Marketing Coordinator, [marketing@shorehistory.org](mailto:marketing@shorehistory.org)

**Pat Doughty**, Docent Manager, [volunteer@shorehistory.org](mailto:volunteer@shorehistory.org)

“ We are  
definitely  
not your  
grandmother's  
Historical Society ”





Dear Member,

We are really having a great year so far, thanks to Hilary and her team. Membership levels, sponsorships, and gala attendance have all enjoyed an outstanding response. The programs and events we've held to date, as you will see in the newsletter, were exciting and alluring. AND, there is much more to come, so we hope to see you often in the fall.

I'm writing to provide you with a bit of advance notice about our upcoming Annual Fund/Capital Campaign. This annual fall event can be the capstone to our most successful year in recent history. We intend to combine our annual fundraiser with target capital giving opportunities which will address our most pressing needs.

All the success we have enjoyed, enabling us to provide the programs and events that we do, have been entirely a result of your support. For that we thank you, and hope that we can count on you in the future.

Caleb Fowler  
President

## S u m m e r   S k i e s   O v e r   F o w l i n g   P o i n t



RAFFLE TICKETS  
1 FOR \$25.00  
5 FOR \$100.00

Raffle runs May through September. Raffle will be drawn at Ker Art in September.

Need not be present to win.

Tickets may be purchased at Ker Place or Saturday mornings at the Onancock Market

Raffle donated by  
**Gordon Campbell**  
**At Altitude Gallery**  
Cape Charles

Date Photographed: August 27, 2014 11:36 A ~ Location: 37°26'34" N 75°49'9" W ~ Print Size 24x36 inch metal print  
Price as shown: \$900

# CALENDAR OF EVENTS

## August

**08** Summer Camp: American Spies & Nature Detectives

**12** Music on the Lawn: The Mark Alan Linton Band

**22-26** Rug Hooking Expo

## September

**09-10** Ker Art & Music Festival

## October

**21** Lunch & Lecture, *Archives Under the Bed: Organizing & Preserving Family Records*

**28** *The Gentleman's Farm* book signing and lecture  
6:30 p.m. at Mimosa Farm. Ticket \$ TBA

## November

**04** Lunch & Lecture, *Uniforms in the Closet: Preserving Family Textiles, Tools, and Other 3-D Artifacts*

**25-26** Eastern Shore Artisans Guild Tour

## December

**09** Holiday Dinner

**10** Holiday Open House & Onancock Christmas Homes Tour

## February 2017

**24** The South You Never Ate: Second Helpings



**9/9** 5 - 8 p | Free Admission/Cash Bar  
LIVE MUSIC: THE CORN FUNK REVUE

**9/10** 10a-3p | Free Admission/Concessions  
ART FESTIVAL | LIVE MUSIC



**Coming Soon**

**Fall 2016**

HISTORY OF BASEBALL ON THE EASTERN SHORE

EXHIBIT & SYMPOSIUM

**FREE & Open to the Public**  
August Boys BBQ/Ice Cream/Cash Bar

**THE MARK ALAN LINTON BAND**  
Starts @ 6 pm  
on the lawn at Ker Place



**Music on the Lawn**

**12**  
August

**The Gentleman's Farm**  
LECTURE RECEPTION BOOK SIGNING



**Date** FRIDAY, OCTOBER 28  
**Time** 6:30 P.M.  
**Place** MIMOSA FARM, CHERITON  
**Tickets** TBA

**Sponsors**  
ESLAND BayCreek



# P R E S E R V E

## DISCOVERING HISTORY IN YOUR OWN BACKYARD

**STEPHANIE TEMPLIN** COLLECTIONS MANAGER ESVHS

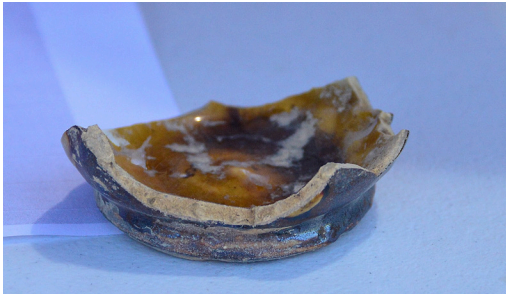


At the Eastern Shore of Virginia Historical Society, the school program, *History Travels*, is often tagged as “Discovering the history in your own back yard,” which is a very apt line for why the Pungo Creek Mills archaeological site is important. Bill Savage found history in his back yard, and in digging through the land records, discovered that it was his own family history.

This site provides an example of early colonial plantations on the Eastern Shore, and further archaeological work

will help reveal the story behind this site. According to Bill, at some point in history, the buildings on the property burned, and it would be fascinating to discover when (and why) this happened. Artifacts found at previous digs indicate that there was trade between the colonial settlers and European merchants, as well as interactions between colonial settlers and the Native Americans on the Shore.

Further Archaeology digs and research at this site will uncover an important part of early Eastern Shore history.



## RECENT ACQUISITIONS

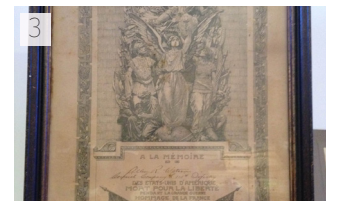
**STEPHANIE TEMPLIN** COLLECTIONS MANAGER ESVHS

In 2015, the Eastern Shore of Virginia Historical Society accepted over 100 new artifacts into our collection. Comprised of objects, documents, and photographs, these artifacts help place the Eastern Shore of Virginia within the broader global context. Donations of artifacts relating to Shore businesses, lands, and history all help tell the unique story of the Eastern Shore. Here are just a few highlights of what was collected in 2015:

<sup>1</sup>A jacket, pennant and booklet were donations relating to Temperanceville School which was host to a high school, elementary school and primary school during its long existence. It's earliest students arrived by horse drawn vehicles or boarded in town. Temperanceville School closed its doors to students in 1978.

<sup>2</sup>Photographer Mary Lincoln Hunt was contacted by the Library of Congress to complete a photo tour of the Eastern Shore of Virginia, recording life and homes up and down the shore during the late 1920's. Using a Brownie camera, she took pictures of historic houses and other aspects of life along the shore, writing details about the houses and people on the back of the photographs. Her 73 photos of Eastern Shore life are now housed in the photography portion of our archives.

<sup>3</sup>Born in August of 1898, Allen Ray Watson grew up on the Eastern Shore. In May of 1917, he enlisted in the Maryland National Guard. Called into active duty in July of that same year, Watson was shipped to the front lines of World War I in Europe. He was killed in action on October 15, 1918. His nephew donated several artifacts relating to Corporal Allen Ray Watson, including a picture of his entire unit, and



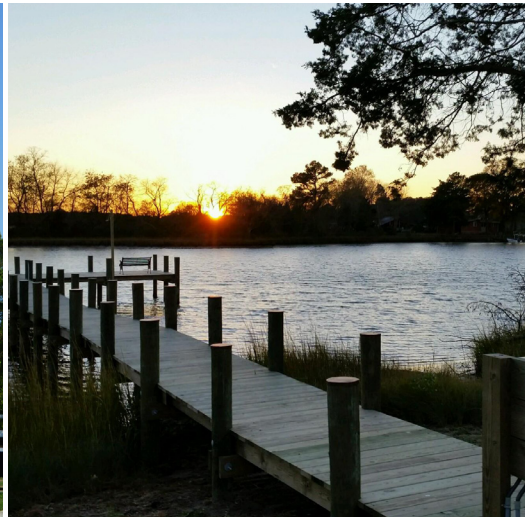
a framed certificate from France in memory of Watson's “death for liberty.”

We have continued to receive new and interesting artifacts in 2016, including an original framed copy of the prominent Eastern Shore Civil War era document, The Dix Proclamation as well as a set of historic brass plaques from the Belle Haven Presbyterian Church. If you would like to donate an artifact to the museum, please contact the Collections Manager, Stephanie Templin, at [collections@shorehistory.org](mailto:collections@shorehistory.org).



# ANNUAL BENEFIT AT SHEPHERD'S PLAIN

HILARY HARTNETT-WILSON EXECUTIVE DIRECTOR ESVHS



This year's annual benefit was held at Historic Shepherd's Plain, childhood home of John Shepherd Ker. Today, Historical Society member Tom Swarm owns Shepherd's Plain and the surrounding property. Under his care the home is under restoration to return it to its former glory. The ESVHS would like to extend its most sincere appreciation to Tom for hosting our benefit and offering us the opportunity to tour his beautiful home and learn about its history and architectural significance.

The evening started by treating our generous sponsors to a champagne reception and a private tour of Shepherd's Plain. Over 155 guests would enjoy cocktails and a dinner of pan seared salmon, herb stuffed chicken, carrot

soufflé, yeast rolls, coconut cake and key lime pie against the backdrop of a magnificent Nandua Creek sunset. A live auction followed dinner and featured a week in historic Havana Cuba, 3 days and 2 nights at the Mount Vernon Farm in Sperryville, VA, a night at Perry Cabin in St. Michael's, MD, and a long weekend at ESLAND's Salt Grove. Finally with business out of the way, guests danced the night away to the tunes of Herbie D and the Dangersmen.

The annual benefit is one of the largest fundraisers for the Historical Society and we are extremely grateful for the support of our generous sponsors and membership. Thank you for making this year's event such a huge success, I hope to see you again next year. I guarantee, *you won't be disappointed!*





# E D U C A T E

## IN MEMORY OF CADA GROVE



Recently, we had to say goodbye to Cada Grove, a dear friend and passionate supporter of the Historical Society. Cada was the embodiment of “those that can, do, and those that can do more, volunteer.” Time is such a precious commodity and Cada gave selflessly and tirelessly of his. When there was a question about the house, the answer would always be, “I’m not sure, but Cada will know.” Thank you, Cada for helping to make the Historical Society what it is today, you continue to inspire us with your talents, wisdom, and service.



## HISTORY IN A BOX

**STEPHANIE TEMPLIN** COLLECTIONS MANAGER ESVHS

In 2015, the Historical Society proudly launched its revamped History Travels program in schools with *History in a Box*. In a replica shipping container, embellished with an image of Ker Place, we have placed educational artifacts to assist teachers in educating local students on Eastern Shore History. Included in the box is a replica peace pipe, 18th century military hat, archaeological artifacts found on Ker Place grounds and enlarged replicas of a colored print of Thomas Savage.

Along with the artifacts are suggested activities and lesson plans for teachers to use, though they are welcome to use the artifacts however they wish. The Historical Society offers PDF versions of the activities and lesson plans as well as links to educational Prezi Presentations on our website: <http://www.shorehistory.org/history-travels/>. If you are a teacher who would like to reserve use of the History Travels Box in your own class-

room, please email [education@shorehistory.org](mailto:education@shorehistory.org) or call Stephanie at 757-787-8012.

As we prepare for the 2016-2017 school year, we are looking to expand our History Travels program to build more boxes to send to more schools. We are also in the process of creating more units to cover 19th and 20th century Eastern Shore history. We are looking for volunteers to help us build replica shipping crates based off our original box, which was built by Historical Society member, Cada Grove. We are also looking for donations, monetary and materials, to help us achieve our goal of helping teachers educate Eastern Shore students of the history that can be found in their own back yard.

If you would like to volunteer for, or would like to support History Travels, please send us an email at [education@shorehistory.org](mailto:education@shorehistory.org) or call Stephanie at 757-787-8012.







## DOWNSTAIRS AT KER PLACE

**O**n Valentine's weekend, history lovers came together in the basement of Ker Place to honor Black History Month. Under the direction of Carla Savage-Wells, several community members read oral interpretations of slave narratives, which

were researched and composed by the 1930's Federal Writer's Project. The Becky Livas Trio rounded out the evening performing jazz and American standards. The ESVHS would like to thank the Virginia Foundation for the Humanities for sponsoring this historic event.



## DR. SUSAN SCHOELWER/MT VERNON

**I**n February, the ESVHS partnered with Bay Creek to bring to our community Dr. Susan Schoelwer, the Robert H. Smith Senior Curator at Mount Vernon. Dr. Schoelwer presented a lecture on *Garden Paths and Fancy Pictures: George Washington's Republican Style of Living*. A cocktail reception preceded the lecture, and was followed by a book signing of Dr. Schoelwer's new book, *The General in the Garden*. A second lecture and book signing was held the next day at the Cape Charles Civic Center.

In May, the Historical Society sponsored a bus trip to Mount Vernon. The group received a private tour of the estate including a tour of the closed-to-the-public third floor, the gardens, and a personal tour with Dr. Schoelwer of the *Garden & Groves* exhibit.

Everyone had a wonderful time and is looking forward to another trip! Stay tuned for updates on future bus trips with the ESVHS!



## SUMMER CAMP

**S**ummer Camps are underway here at Ker Place! *The Little Crafters* enjoyed building their own snacks, decorating boats and treasure chests, and making their own musical instruments! They also got to experience a behind the scenes tour of Ker

Place with Docent James! We're very excited about our next camp: *Advanced American Spies & Nature Detectives*, a partnership with the Eastern Shore Soil & Water Conservation District! For more information about our camps, contact Stephanie Tempelin, [education@shorehistory.org](mailto:education@shorehistory.org).





# THE SOUTH YOU NEVER ATE: SECOND HELPINGS

**BERNARD L. HERMAN** GEORGE B. TINDALL DISTINGUISHED PROFESSOR OF SOUTHERN STUDIES CHAIR, UNC CHAPEL HILL

The ingredients and flavors of the Eastern Shore of Virginia stand as one of the great undiscovered culinary traditions in the United States. The taste of an oyster varies from creek to creek, from Bayside to Seaside; local diners passionately debate the qualities of clam fritters, sweet potato pies, oyster stews, and bitter greens. Some dishes, like oyster pie, linger only on the horizon line of memory.

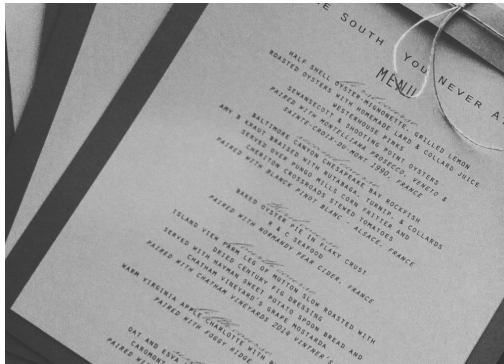
A cohort of diners gathered at Ker Place on a chilly wet March evening in 2016 to rediscover the culinary distinction of Eastern Shore foodways. **Chef Amy Brandt**, blending tradition with invention, brought forth a seven course dinner that started with oysters on the half shell representing three different salt ecologies, followed by roast oysters with a collard juice reduction, and a succession of dishes that included baked Rockfish with stewed tomatoes, Hayman sweet potato spoon bread, and oyster pie. Hog Island mutton roast served with century figs paired with a 2014 Vintners Blend from **Chatham Vineyards** brought tears of pleasure to a number of diners.

Well, we're back! **The Eastern Shore of Virginia Food-**

**ways Group** in collaboration with the Eastern Shore of Virginia Historical Society are deep in conversation, planning for a late February 2017 dinner. **Chatham Vineyards, Shooting Point** and **Sewansecott** oyster companies will be returning along with contributions from our many friends including **Matt Ertle (Hog Island sheep), Gus Gustafson (Hayman sweet potatoes and homemade sea salt), and Bill and Laurel Savage (Pungo Creek Cornmeal).**

There will be new dishes, too. Whole fig preserves in the style of President-elect Grover Cleveland's Hog Island Thanksgiving dinner, smoked and salted fish, overnight pone, and locally made cheese and pickles are under discussion. Each course will be lubricated with Eastern Shore wines and heirloom ciders and punctuated with commentary on the origins and histories of the dishes before us.

Mark your calendars now for February 24, 2017. Buy your tickets early. We can only serve the first forty diners. Proceeds from the dinner will go to educational programs at the Eastern Shore of Virginia Historical Society.



## I N T E R P R E T

### HOOKED ON HISTORY: EXPLORING OUR NEWEST EXHIBIT

**STEPHANIE TEMPLIN** COLLECTIONS MANAGER

What do Tarot Cards and rugs have in common? Well, honestly not much. However, they both have a long, interesting history, here in North America and in Europe. They were also the subjects of the Eastern Shore of Virginia Historical Society's exhibit and workshop: *Exploring the Tarot* this past July.

The technique of using a hook to pull loops of yarn or fabric through a stiff woven base dates back to the those of Scandinavian descent who settled in Scotland, though earlier versions of the craft can be found in other parts of Europe. The descendants of these early rug hookers eventually carried knowledge of their craft to the new world, where it blossomed.

As settlers had less new materials to work with, every scrap of fabric had to be reused. Many early American rugs have fabric from old curtains, clothes, and stockings. Over the years, rug hooking has grown from simple floor coverings to beautiful works of art.

The history of tarot cards is similarly long, beginning in southern Europe as a card game, tarochinni, which is still played today. Many today know of the tarot as a method of divination, with the 78-card deck divided into two distinct parts: a 22-card Major Arcana (represents large turning points) followed by a 56-card Minor

Arcana (day-to-day insights). It's believed that a combination of each card's symbolism as well as a variety of card layouts gave insight to one's troubles. The most widely-used version of Tarot cards, Rider-Waite-Smith deck, published in 1910 serves as the inspiration for the visiting rug hooking exhibit.

In 2015, highly respected Rug Hookers, Michele Micarelli and Loretta Scena, both certified National Guild of Pearl K. McGowan Hookrafters, conceived of an idea for different rug hookers to hook their interpretation of a card in the Major Arcana. A group of 23 artists across the U.S. and Canada each picked a card in the major arcana, with the 23rd artist creating a design for the back of the cards. One of the members of the Historical Society, Lynne Fowler, was invited to hook her interpretation of the "Chariot" card. Mrs. Fowler is a long time rug artist who has written many articles for *Rug Hooking* magazine, is a certified teacher of rug hooking, and has had her work published in *Celebration of Rug Hooking*.

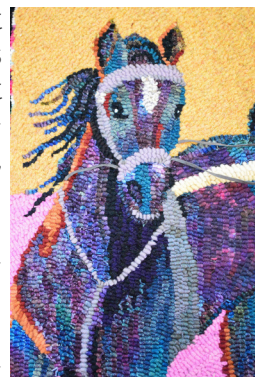


Image of rug on display created by ESVHS member, Lynne Fowler

# Christmas in Onancock

9 & 10  
DEC

**Christmas Homes Tour | Music Festival | Holiday Decorations | Hometown Christmas Parade**

Dear Friends,

Each year the Onancock Business and Civic Association membership selects a non-profit organization to benefit from the proceeds of the *Christmas Homes Tour*. We are so excited to announce that this year The Eastern Shore of Virginia Historical Society and the Historic Onancock School and Community & Cultural Center have both been selected.


Onancock's 2016 *Christmas Homes Tour* and *Annual Music Festival* will be held on Saturday, December 9th from 1:00 to 5:00. Visitors can celebrate Christmas in Onancock with a weekend of holiday fun. Santa arrives at the Onancock Wharf at 11:00 a.m., escorted safely to shore by the Onancock kayak reindeer. This year, six Onancock Homes and Historic Ker Place will be open and decorated for Christmas. Cokesbury Church will host the *Annual Music Festival* and *Christmas Carol Sing-a-Long*. In addition to the *Christmas Homes Tour*, North Street Playhouse will present its holiday production, and all of the downtown Onancock businesses and restaurants will be offering holiday shopping and lunch and dinner specials. The festivities culminate Sunday afternoon when the town hosts the *Annual Christmas Parade*.

Last year the *Christmas Homes Tour* raised over \$12,000 and donated 50% of the tour's proceeds to its designated recipient. As one of the designated recipients for the 2016 funds, the ESVHS would like to use the money to create a multi-faceted venue at Hopkins and Brothers Store that

will feature a tourist information center and mini museum. The exhibit at Hopkins and Bros. Store will be a visual display of Onancock's historic and current business community coupled with photographs of the wharf in its heyday as a maritime trading center. The shelves, bins and countertops will be staged with various artifacts reminiscent of the store's interior at various periods of operation. The tourist information center will consist of a large map of local points of interest, a visitor kiosk for brochures, and a flat screen TV that will feature a scrolling Eastern Shore calendar of events. Finally, there will be an area highlighting the Historical Society with pictures and information about Ker Place, its preservation efforts and upcoming events. For many visitors to the town of Onancock, the Wharf and Hopkins Bros. Store is their first point of contact. By creating an education venue and visitor portal, visitors will become more engaged in Onancock and the Eastern Shore and want to further explore Onancock's businesses and points of interest.

Below are sponsorship opportunities for the *Christmas Homes Tour* and Onancock holiday weekend. We hope you will support us at the highest level. Your generous support will ensure that the ESVHS will receive the funding to complete this extraordinary exhibit. Your pledge before September 1st will assure your name or company's name on all event promotion, including business signage, website, brochures, and tickets.

Many thanks!



## Sponsor Levels and Benefits

<b>Platinum</b>	\$500 or above: 4 free tickets, name and logo on the shuttle buses day of the tour, prominent name on marketing materials, tickets, and tour programs, name mentioned on radio interviews
<b>Gold</b>	\$300-499: 2 free tickets, name on shuttle buses, name on marketing materials, tickets, and tour programs, name mentioned on radio interviews
<b>Silver</b>	\$200-299: 2 free tickets, name on marketing materials, tickets and tour programs
<b>Bronze</b>	\$100-199: 1 free ticket, name on tickets and tour programs

Yes, I would love to sponsor the 2016 Christmas Homes Tour at the \_\_\_\_\_ level, for \$\_\_\_\_\_.

Name \_\_\_\_\_

Address \_\_\_\_\_

Phone \_\_\_\_\_ Email address \_\_\_\_\_

Please make checks payable to "OBCA Special Projects." OBCA is a 501 (c) (3) non-profit organization.

For more information about sponsorship or about the exhibit details, contact ESVHS at (757) 787-8012.



# CONVERSATION WITH DANNY DOUGHTY



Internationally and nationally award-winning Eastern Shore native artist Danny Doughty recently sat down with Executive Director, Hilary Hartnett-Wilson, to discuss a little bit about his personal history and his art.

Danny is an Eastern Shore Treasure! He has won many awards and received numerous accolades: Danny is most proud of the fact that his art is instantly recognizable to the public, distinguishing him from his peers. This is a standard Danny has always considered to be the mark of a great artist and his measure of his own success.

## A little bit of personal history

*My parents had a tiny little fish market, it was a one room shack. The African-American women [who came to buy fish for their families] were always there for me. They were a big part of my life, always have been, and still are. I grew up dirt poor. My work shows the grit and glory of this kind of life.*

## Understanding Danny's work

*[My art] is my filter of trying to create a world of hope, life, and love, and people that love me. The filter comes off when I am living my life, back in reality. Only when I sit and create, I am taken away from that real world.*

*I pour myself into my work, to where it takes away the harshness of real life, and creates a world where I feel happy. [It contains] all the elements that make me feel good and safe.*

*[My work] is about oppressed people (the African-American women) in an oppressed place. These are the 99 percenters of that day. They had a sense of community: where your word was your report card in life, not your checking account.*

*The star in us is the part of us that we don't see. Our body, what people see, is the container that carries our soul. How we act comes from our soul. [These women] happened to have a container that by the time they drew their first breath, they had already been condemned, but their soul is outspoken.*

*For them, it was all about being thankful for what you have and not complaining about what you didn't. These women understood as God said, give unto others and He keeps giving to you. They understood that. They loved you without conditions.*

*I have boxes of letters from people. Even from people that didn't like [my work] at first, then they fell in love with it when they realized it's way more than that red or that green color. There's more going on there.*

## What projects do you have in the works?

*In the fall, I'm working on a 12-piece series about sisters. It's about the journey of a mother having a little girl and she's expecting another daughter. It shows the progression of the girls and how they interact, then begin to separate because of things [in life]... as life gets further along, they realize how stupid [their separation] is, and they start to come back together on this journey.*

*It's powerful because it can relate to any relationship: husband and wife, mother and daughter, siblings, friendships.*

## What is the story behind the raffle piece?

*[The women depicted in the picture once worked for the] white family who lived in the home. The family moved onto a bigger home and thought so much of these women that they leave them this home to live in for the rest of their lives.*

*I paint them in the same clothes to represent unity. They take pride in themselves and in their love and responsibility for each other.*

## Eastern Shore Heirloom Creekside Series



RAFFLE TICKETS  
1 FOR \$25.00  
5 FOR \$100.00

Raffle runs May through December 2016.  
Raffle will be drawn during Holiday Open House. Need not be present to win.

Tickets may be purchased at Ker Place, Onancock Market, The Red Queen Gallery, Danny Doughty's 2nd Floor Gallery, and other locations

Painting size: 41"x61"

# Your membership counts

- Funding for Lectures & Educational Programs
- Preserve Collections & Displays
- Exhibit Updates
- Maintaining & Expanding the Museum

Individual	\$35
Household	\$55
Supporter	\$100
Friends of the Historical Society	\$275
Patron	\$500
Benefactor	\$1000

We have made giving easy.  
Payments can be made Online at  
**shorehistory.org/membership**  
If you would like to speak to someone  
regarding a membership, call  
**757-787-8012**

P.O. Box 179, Onancock, VA 23417



**Historical**  
**SOCIETY**  
EASTERN SHORE OF VIRGINIA



This isn't  
your typical  
Historical  
Society



**Eastern Shore of Virginia Historical Society**  
P.O. Box 179, Onancock, Virginia 23417

PRST STD  
U.S. Postage Paid  
Non-Profit  
Organization  
PERMIT NO. 30  
Onancock, VA  
23417